



News Room  
Careers

About Lutron  
Contact Us

Home  
Training

New improved search [GO](#)

Home Lighting Control Commercial Lighting Control Products Service & Support Where to Buy Technical Info

# Maestro® | Multi-location Dimmers with Designer Styling.

**What Is Maestro** | **New Maestro Wireless** | **Products** | **Technical Info**

- Maestro Family ▶
- New Maestro Wireless
- Dual Applications ▶
- Accessories ▶

[Maestro >> Products >> Maestro IR Fan Controls](#)

[IR Transmitters](#)  
[Fan Canopy Module](#)  
[Footnotes](#)

Customer Service  
1.888.LUTRON1  
8AM-8PM EST

Technical Assistance  
1.800.523.9466  
24 hours a day,  
7 days a week

Request:  
Printed Literature  
Sales Contact



Maestro IR Fan/Light Control

**Maestro IR fan controls provide remote control to vary the speed of up to four ceiling paddle fans.**

- Control up to four fans from one Maestro fan control from anywhere in the room
- 7 quiet speeds provide enhanced range of comfort
- Recall your favorite fan speed as you enter the room
- Adjust fan speed from up to three locations
- Works with virtually all existing wiring
- Control uses a [fan canopy module](#) to integrate with the fan
- To control multiple fans, use one canopy module per fan

Listed; Lutron controls are rated at 120VAC, 60Hz unless otherwise noted.

Available in 7 gloss and 20 satin colors

[Online Tech Support](#)

## IR Fan Controls

[Return to Top](#)



Watch an installation video



| Model       | Description                                       | Capacity                    | Contents   | Notes                 |
|-------------|---|-----------------------------|--|-----------------------|
| MIR-FQ4FMT- | single pole or multi-location                     | Up to 4 fans,<br>1A per fan | (1) control,(1) fan remote, and(1) canopy module | <a href="#">1,2,3</a> |
| MA-AFQ4-    | companion fan control, does not have an IR window |                             | (1) companion control                            |                       |
| CM-FQ1      | fan-only canopy module                            | One 1A fan                  | (1) canopy module                                | <a href="#">3,4</a>   |

## IR Fan/Light Control

[Return to Top](#)

| Model       | Description                       | Capacity   | Contents   | Notes |
|-------------|-----------------------------------|------------|--|-------|
| MIR-LFQTHW- | single pole fan and light control | One 1A fan | (1) control,(1) canopy module,(1) fan/light remote,(1) wallplate |       |
|             | single pole or multi-             |            | (1) control,(1)  |       |

|            |   |                                    |                                    |                     |
|------------|---|------------------------------------|------------------------------------|---------------------|
| MIR-LFQMT- | location fan and light control                              | 300W halogen or incandescent light | fan/light remote,(1) canopy module | <a href="#">1,2</a> |
| MA-ALFQ35- | companion fan and light control, does not have an IR window |                                    | (1) companion control              |                     |

## IR Fan/Light Packages

[Return to Top](#)

If you have a separate switch for the light and fan, order one of each of the products listed below, plus a 2 gang Claro faceplate.

| Model                               | Description                                    | Capacity                    | Contents                             | Notes                 |
|-------------------------------------|--|-----------------------------|--------------------------------------|-----------------------|
| MIR-FQ4FMT-                         | fan only control single pole or multi-location | Up to 4 fans,<br>1A per fan | (1) control and<br>(1) canopy module | <a href="#">1,2,3</a> |
| MIR-600- or other Maestro IR dimmer | preset IR smart dimmer                         | 600W                        | (1) control                          | <a href="#">1</a>     |
| MIR-ITFS-LF-WH                      | fan/light IR transmitter                       | N/A                         | (1) fan/light remote                 | <a href="#">5</a>     |

## IR Transmitters

[Return to Top](#)

| Model          | Description               | Contents             | Notes                           |
|----------------|---------------------------|----------------------|---------------------------------|
| MIR-ITFS-WH    | light-only IR transmitter | (1) light remote     | white only<br><a href="#">5</a> |
| MIR-ITFS-LF-WH | fan/light IR transmitter  | (1) fan/light remote |                                 |
| MIR-ITFS-F-WH  | fan-only IR transmitter   | (1) fan remote       |                                 |

## Fan Canopy Module

[Return to Top](#)

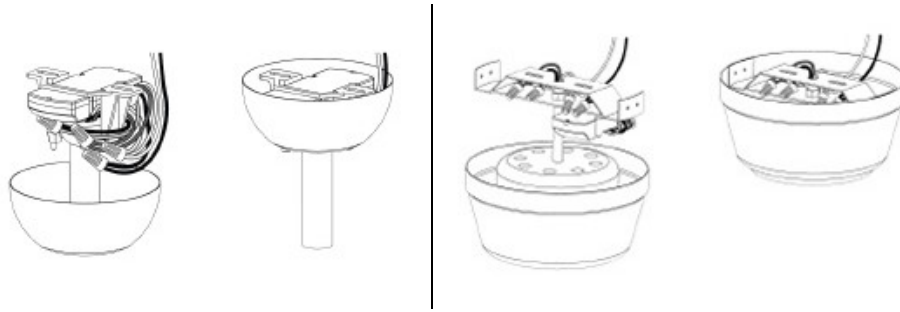


Every fan controlled by a Maestro fan or fan/light control requires installation of a canopy module, available only in white. Model number CM-FQ1 or CM-L300FQ1.

The information on this page is for illustrative purposes only. Refer to instruction sheet prior to and during installation.

[Down Rod Bracket Installation](#)

[Flush Mount Bracket Installation](#)



## Footnotes

[Return to Top](#)

1. No derating required when ganged.
2. Do not use with mechanical 3-way or 4-way switches. Use only one Maestro wall control per lighting circuit with up to two accessories for full-function multi-location control.
3. One ceiling canopy module is required for each fan.
4. Canopy modules only available in white - do not add color code.
5. Available in white only.

This document was created with Win2PDF available at <http://www.daneprairie.com>.  
The unregistered version of Win2PDF is for evaluation or non-commercial use only.